



GOOD MORNING

Have Good Trading Day

TUESDAY



Price is what you pay.  
Value is what you get.

- Warren Buffet



## MARKET PULSE

### INDIAN INDICES

NAME	CMP	NET CH.	%
SENSEX	24825	-109	-0.44
NIFTY	7563	-37	-0.49

### INDIAN ADR'S

SYMBOL	CLOSE	GAIN/ LOSS %
DRREDDY	42.78	-3.63
HDFCBANK	59.46	+1.66
ICICIBK	7.10	-0.42
INFY	16.25	+0.49
TATAMOTOR	26.45	+3.40
WIPRO	10.95	-1.88

### FII AND MF ACTIVITY

SYMBOL	In Crs.
FIIs Eq (Provisional)	-1319.24
FIIs Index Future	-318.71
FIIs Index Options	1623.59
FIIs Stock Future	-612.73
FIIs Stock Options	-30.90
DII's Eq (Provisional)	900.99

### CURRENCY

RBI RATE	11-JAN-2016
RUPEE - \$	66.7885
EURO	72.9264
YEN 100	56.9300
GBP	97.0570

## MARKET PULSE

### GLOBAL INDICES

NAME	CMP	NET CH.	%
DOW	16398	+52	+0.32
NASDAQ	4638	-5	-0.12
NIKKEI	17322	-375	-2.12
HANG SENG	19945	+56	+0.28
SGX NIFTY	7568	-17	-0.22

### WORLD COMMODITIES

FUTURE	U\$\$	CHANGES
CRUDE	30.99	-0.42
NATURAL GAS	2.344	-0.052
GOLD	1095.5	-0.7
SILVER	13.865	-0.001
COPPER	1.9695	-0.0030

### WORLD EVENTS

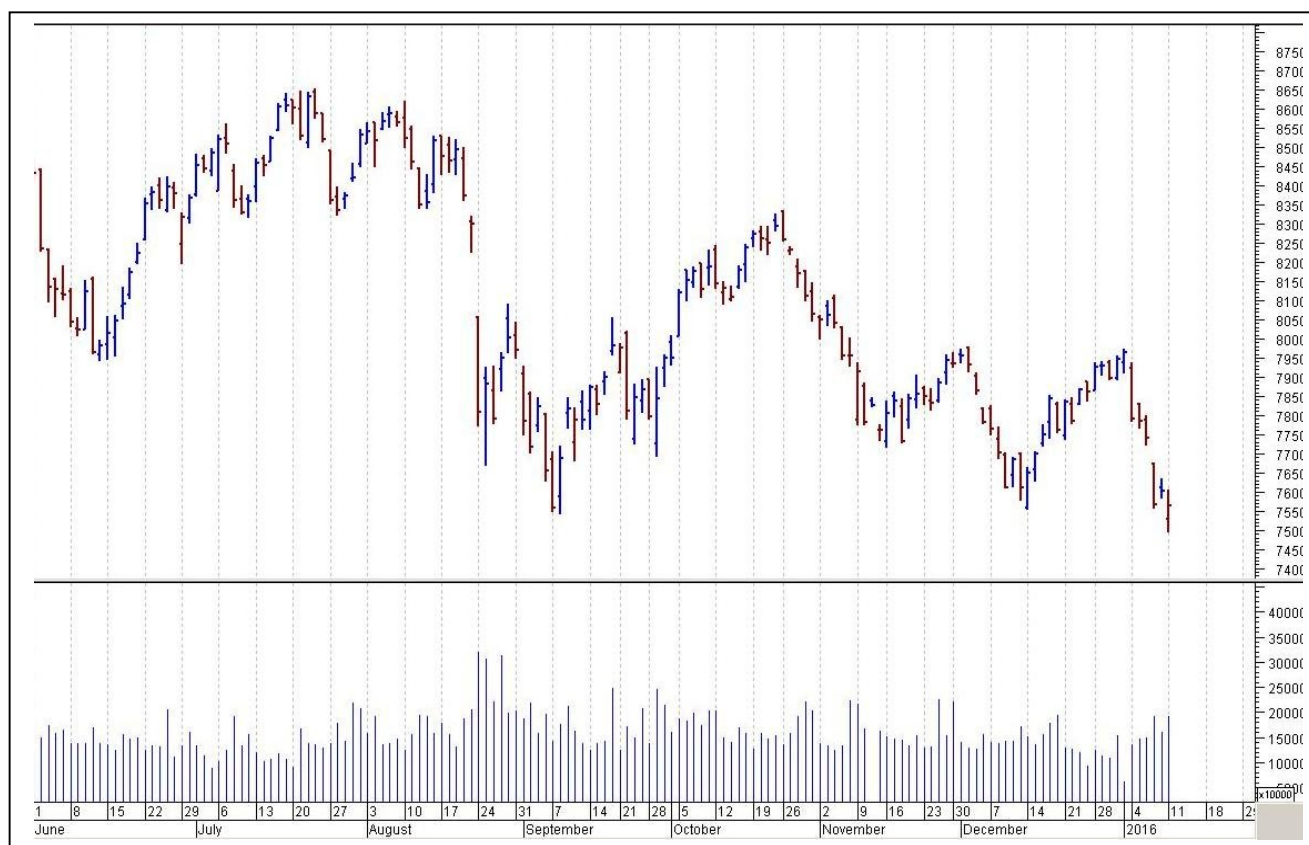
- US:JOLTS Job Openings
- FOMC Member Fischer Speaks
- UK:Manufacturing Production m/m
- BOE Gov Carney Speaks

## TOP STORY

- Delhi District Court sends Unitech MD Sanjay Chandra & 2 others to judicial custody till January 25
- Omax Auto -Sold remaining 51 percent stake of subsidiary GMAX Auto on a slump sale basis for Rs 2.55 lakh
- IDFC Bank buys upto 10 percent in ASA International for Rs. 8.5 Cr: ET
- TVS Motor backs out of patent row over invention of fluorescent made self locating ignition lock assembly: FE
- IOC - Paradip refinery to boost profits by 20-30 percent: FE
- HDFC says arm HDFC Standard Life sets up unit at Dubai International Finance Centre
- Tata Teleservices aims to breakeven by FY17 June quarter: BS
- Adani Ports plans to raise Rs 4,500 crore through Long term bonds: BS
- PI Industries commenced commercial production at its 3rd unit located at Sterling SEZ facility, Gujarat



## NIFTY CHART



## MARKET COMMENTARY

It turned out to be a lackadaisical performance from the benchmark indices on Monday as they failed to snap the session in the green territory and settled below the neutral line as investors at large remained reluctant to build on long positions ahead of official start of the third quarter earnings season with TCS' result and also monthly industrial production data. Sentiments remained subdued with a private report stating that consumer sentiments in India fell for the fourth consecutive month in December to the lowest on record, as consumers reported a further deterioration in their personal finances amid rising inflation. Trading sentiments were weakened further with Commerce and Industry Minister Nirmala Sitharaman's statement that the devaluation of the Chinese currency is a 'worrying' development which will make Indian exports expensive and widen the trade deficit with the neighbouring nation. For today's trade Nifty likely to trade in the range between 7585 – 7620 in the upper side and 7540- 7510 in the lower side.

### MARKET LEVELS

	CMP	SUPPORT LEVELS				RESISTANCE LEVELS			
NIFTY	7563	7540	7510	7470	7450	7585	7620	7645	7650
USDINR	66.96	66.85	66.7	66.65	66.55	67.05	67.15	67.25	67.3





### FUTURES CORNER

SCRIPS	CLOSE	SUPPORT	TARGET		REMARKS
		STOP LOSS	T1	T2	
MCLOEDRUSS	167.6	165	171	174	TRADING CALL
HEROMOTOCO	2514.25	2505	2530	2544	TRADING CALL
BAJAJ-AUTO	2367.05	2355	2380	2394	TRADING CALL

### EQUITY CORNER

SCRIPS	CLOSE	SUPPORT	TARGET		REMARKS
		STOP LOSS	T1	T2	
PREMIER	58.7	57	62	64	TRADING CALL
RTNPOWER	12.55	12	13.4	14	TRADING CALL

### DELIVERY BASED CALL / INVESTMENT CALL

SCRIPS	CMP	SUPPORT	TARGET		REMARK
		STOP LOSS	T1	T2	

### BULK DEALS (BSE)

SCRIP	CLIENT NAME	BUY/SELL	QUANTITY	PRICE
RPPINFRA	LTS INVESTMENT FUND LTD	B	150,000	114.5
VETO	THAKUR NIHALCHAND TOLANI	S	119,000	118.51
CMI	GMO EMERGING DOMESTIC OPPORTUNITIES FUND	B	1,178,365	304

### BULK DEALS (NSE)

SCRIP	CLIENT NAME	BUY/SELL	QUANTITY	PRICE
ESSDEE	FLOWERING TREE INVESTMENT MGMT PTE LTD A/C ASHOKA FLO	SELL	306802	153.52
GENUSPOWER	RELIANCE MUTUAL FUND	BUY	8062000	52.5
GENUSPOWER	GENUS SHAREHOLDERS TRUST	SELL	20000000	53.67

### SCRIP'S IN F&O BAN

(To resume for normal trading below 80% of market wide limit required)

DLF, IBREALEST



NIFTY 50 STOCKS: SUPPORT & RESISTANCE						
Symbol	Close	Support 1	Support 2	Pivot Point	Resistance1	Resistance2
ACC	1298	1279	1260	1291	1310	1322
ADANI PORTS	234	231	229	235	238	241
AMBUJACEM	198	195	193	197	200	201
ASIANPAINT	874	862	851	873	885	896
AXISBANK	417	409	400	416	425	432
BAJAJ-AUTO	2361	2336	2312	2354	2379	2397
BANKBARODA	139	136	132	138	141	144
BHARTIARTL	321	316	311	320	325	329
BHEL	149	148	146	150	152	154
BOSCH LTD	18108	17951	17793	18120	18278	18448
BPCL	888	881	875	892	899	909
CAIRN	130	125	121	129	134	137
CIPLA	610	604	597	611	617	624
COALINDIA	316	312	307	315	320	323
DRREDDY	2932	2905	2878	2949	2976	3021
GAIL	369	365	362	370	374	379
GRASIM	3622	3554	3487	3599	3666	3710
HCLTECH	815	806	798	820	828	841
HDFC	1162	1151	1140	1161	1172	1182
HDFCBANK	1059	1049	1039	1055	1065	1071
HEROMOTOCO	2505	2462	2419	2494	2537	2568
HINDALCO	78	75	73	77	80	81
HINDUNILVR	812	802	793	811	821	829
ICICIBANK	239	237	235	240	243	246
IDEA	130	129	127	131	132	134
INDUSINDBK	937	929	921	936	943	950
INFY	1056	1049	1041	1059	1066	1077
ITC	316	312	307	314	319	321
KOTAKBANK	701	686	672	696	710	719
LT	1173	1151	1128	1168	1190	1208
LUPIN	1701	1689	1677	1702	1714	1727
M&M	1163	1148	1134	1168	1182	1202
MARUTI	4272	4160	4047	4230	4343	4413
NTPC	142	138	135	141	144	146
ONGC	226	223	220	225	228	230
PNB	103	102	100	103	104	106
POWERGRID	143	140	136	143	146	149
RELIANCE	1052	1021	991	1041	1071	1091
SBIN	204	202	200	205	207	210
SUNPHARMA	782	773	763	789	798	814
TATAMOTORS	360	346	332	356	369	379
TATAPOWER	67	66	65	67	68	69
TATASTEEL	252	246	241	250	255	259
TCS	2362	2346	2330	2365	2381	2400
TECHM	507	503	499	510	514	521
ULTRACEMCO	2727	2673	2620	2706	2759	2792
VEDL	85	79	73	83	89	92
WIPRO	537	530	522	542	549	561
YESBANK	695	679	663	692	707	720
ZEEL	410	404	398	409	415	420



## NEWS & RUMOURS:

- Gold (Spot Dollar) major support = \$1068/\$1049 & Resistance = \$1128/\$1157.
- Crude oil range->\$27 to \$37.
- Stock Gains Short-Lived as Chinese Volatility Hurts Oil, Metals: - U.S stocks fluctuated after the worst week for equities since 2011 and government bonds fell with the yen as investors assessed another drop in Asian markets that sent Chinese shares to the lowest since September.
- Copper sinks to 6-1/2 year lows as China markets plunge again: - Copper prices tumbled to the lowest level since April 2009 on Monday, as steep declines on [Chinese stock markets](#) dampened appetite for the red metal. [Copper](#) for March delivery on the Comex division of the New York Mercantile Exchange plunged 4.6 cents, or 2.28%, to trade at \$1.970 a pound as of 08:00 GMT, or 3:00AM ET. It earlier fell to \$1.966, a level not seen in more than six years.
- Natural gas futures retreat after rallying to 11-week high: - U.S. natural gas prices declined on Monday, as investors locked in gains from a recent rally which took prices to an 11-week high as updated weather forecasting models pointed to freezing temperatures in the U.S. east coast until the end of the month.
- Oil under fresh pressure as China stocks drop again: - Oil prices held near the lowest levels in more than a decade on Monday, as further turmoil in the [Chinese stock market](#) added to concerns over the Asian nation's economy.
- Gold holds near 9-week highs amid global stock market volatility: - Gold prices held near the prior session's nine-week high on Monday, as market players sought refuge amid heightened volatility in global stock markets.

## TRENDS & OUTLOOK – DATE: 12- Jan- 2016

### PRECIOUS METALS:

COMMDITY (MCX)	S2	S1	PIVOT POINT	R1	R2
GOLD (Feb)	25410	25700	26010	26190	26420
SILVER (Mar)	31500	32700	33850	35100	36333

### BASE METALS

COMMDITY (MCX)	S2	S1	PIVOT POINT	R1	R2
COPPER (Feb)	282	288	296	302	307
ZINC (Jan)	94.50	96.60	99.25	102.40	104.95
LEAD (Jan)	102.45	105.10	107.60	110.50	112.75
NICKEL (Jan)	531	545	558	579	597

### ENERGY

COMMDITY (MCX)	S2	S1	PIVOT POINT	R1	R2
CRUDE OIL (Jan)	1960	2030	2190	2266	2345
NATURAL GAS (Jan)	147	154	162	167	171

### DATE TALKS : TODAY'S ECONOMIC DATA :

Foreign Direct Investment, M2 Money Supply & New Loans of China, BOE Gov Carney Speaks, NIESR GDP Estimate, JOLTS Job Openings, IBD/TIPP Economic Optimism.





Registered Office

Indira House, 3rd Floor, 5 Topiwala Lane,  
Opp. Lemington Road Police Station, Grant Road (East), Mumbai - 400007.

Corporate Office

'Ramavat House' E-15, Saket Nagar, Indore - 452018 (M.P.)

Customer Care

Tel: +91-731-4097170/ 71/ 72/ 73/ 74 M. +91 93031 72345

Email: [customercare@indiratrade.com](mailto:customercare@indiratrade.com) [www.indiratrade.com](http://www.indiratrade.com)



INSTITUTIONAL DEALING UNIT

Africa House, 5, Topiwalla Lane, Lamington Road, Mumbai, 400007

Tel: +91 22 30080678 Fax : +91 22 23870767 Email : [ie@indiratrade.com](mailto:ie@indiratrade.com)

**Disclaimer**

This report is for private circulation within the Indira Group. This report is strictly confidential and for information of the selected recipient only and may not be altered in any way, transmitted to, copied or distributed, in part or in whole, to any other person or to the media or reproduced in any form. This report should not be construed as an offer or solicitation to buy or sell any securities or any interest in securities. It does not constitute a personal recommendation or take into account the particular investment objectives, financial situations, or any such factor. The information, opinions estimates and forecasts contained here have been obtained from, or are based upon, sources we believe to be reliable, but no representation of warranty, express or implied, is made by us to their accuracy or completeness. Opinions expressed are our current opinions as of the date appearing on this material only and are subject to change without notice.